

MILK

ZOU



M R

Y O U

MANY TIGERS. DIFFERENT STRIPES.

Getting into the University of Missouri is important. It's what you get out of it that makes a difference.

Year after year, our students learn more about themselves than anything else. In addition to earning internationally respected degrees, Mizzou students discover what makes them tick.

That is by design. At Mizzou, we believe that's what college is about: you. It's about exploring your passions, learning what you love and seizing your source of inspiration. It's about paving your career path.

That's why everything here revolves around you. The wide-ranging curriculum, the limitless possibilities, the tailored opportunities and the personal development.

But most of all, the culture at Mizzou is open to you. You'll meet the people who encourage you to be you, who welcome your quirks and who don't just accept but also celebrate the individuality of all Tiger stripes. Ferociously. Faithfully. Kindly. That's what Tiger pride is all about. That's **Mizzou**.

IF THAT SOUNDS GOOD, THAT'S YOU.



35,448
STUDENTS

2,184
FACULTY AND
INSTRUCTORS

STUDENT-TO-FACULTY RATIO - 20:1

1,262 ACRES OF
CAMPUS

6,000+
TREES **357**
BUILDINGS

ONE OF SIX U.S. PUBLIC UNIVERSITIES
WITH LAW, MEDICINE AND VETERINARY
MEDICINE ON ONE CAMPUS

300+
DEGREE
PROGRAMS **18** COLLEGES &
SCHOOLS

27.7 PERCENT
OF MU FRESHMEN
WERE IN THE TOP 10 PERCENT
OF THEIR HIGH SCHOOL CLASSES **26**
AVERAGE
ACT SCORE

20 INTERCOLLEGIATE
ATHLETIC TEAMS

600+
STUDENT
GROUPS **40+** CLUB & REC
SPORTS



One of the
most beautiful
campuses
in America.

– BuzzFeed

SOMETIMES YOU HAVE TO LOOK BACK TO GO FORWARD.

Mizzou was founded in 1839 as the University of Missouri in Columbia. It was the first public university west of the Mississippi River. Many of its buildings are listed on the National Register of Historic Places. The campus, which doubles as a botanic garden, is renowned for its classic elegance. Francis Quadrangle is listed by Business Insider as one of the "14 Most Beautiful and Iconic American College Quads."

It is a place that more than 300,000 living alumni have called home, and in the fall many continue to come back for Homecoming. Prominent authors, musicians, directors, politicians and athletes are part of the Mizzou family.

YOU ARE NEXT.



YOU CAN BE ANYTHING.

MOST IMPORTANT: YOURSELF

Maybe you already know what you want to be and do, or maybe you don't. That's OK. No pressure. Now is the time to explore. With more than 300 degree programs, 18 schools and colleges, outstanding undergraduate research opportunities and our awesome version of "breaks" here and abroad, we're certain you'll figure it out. And when you do, we'll be right there cheering you on.





“With a flexible interdisciplinary studies degree, I’m not tied down to a strict program. While all of my chosen tracks closely relate to one another, they are all different. After graduation, I hope to be in community development while working on freelance photography.”
– Ymani Wince

LEARN WHAT YOU LOVE.

Pre-med. History. Journalism. Undecided. Mizzou is all about choices. Here, you’ll have the opportunity to make many. We offer numerous degree programs and niche specialties within our schools, colleges and departments. You can even create your own degree. How cool is that? Customize. Specialize. It’s your education; it’s your degree. So don’t sweat it. You will figure it out, and when you do, you’ll know it’s right for you.

YMANI WINCE, *Florissant, Missouri*
Interdisciplinary Studies
(Journalism, Communication,
Media Studies)

GET STARTED. APPLY OR SCHEDULE A TOUR TODAY.

18 SCHOOLS AND COLLEGES. COUNTLESS OPPORTUNITIES.

COLLEGE OF AGRICULTURE, FOOD AND NATURAL RESOURCES (CAFNR)

Includes the School of Natural Resources

Our 15 degree programs influence the region's largest industries and address the world's most significant challenges, including agricultural policy and economics; tourism and hospitality; food nutrition, production, processing and safety; environmental sustainability; and animal and human health.

COLLEGE OF ARTS AND SCIENCE (A&S)

Includes the School of Music

You will learn from nationally and internationally recognized faculty. Degrees are as varied as art, chemistry, philosophy, physics and film studies. Our graduates have played many roles, including Academy Award-winning actor, deputy director of the CIA, cartoonist, astronaut and Missouri's first poet laureate.

TRULASKE COLLEGE OF BUSINESS

Includes the School of Accountancy

At our top-ranked business school, you'll gain real-world professional experience through a rigorous curriculum and applied learning. Meet executives, study abroad, invest in the market, or launch your new venture — all at Mizzou.

COLLEGE OF EDUCATION

You want to be an educator. Mizzou works in 349 schools in 22 districts across the state to ensure that you experience classrooms in rural, urban and suburban settings.

COLLEGE OF ENGINEERING

Learn to solve problems that will make the world a better place, and explore the frontiers of science and technology through the college's varied and vigorous research program. Participate in extracurricular organizations and activities to build leadership, entrepreneurship and teamwork skills that will support your success as a professional engineer.





SCHOOL OF HEALTH PROFESSIONS

Students get hands-on research and clinical experiences as part of a first-class academic health center. Your education happens in classrooms, clinics and labs where faculty clinicians, researchers and real patients help you find your passion in health care.

SINCLAIR SCHOOL OF NURSING

We prepare top nurses, educators and researchers. Research and study abroad opportunities will enhance your college experience, and, rest assured, our NCLEX pass rate is well above the national and state average.



COLLEGE OF HUMAN ENVIRONMENTAL SCIENCES (HES)

Includes the School of Social Work

Major in HES and you will improve how people live by addressing human needs and enhancing individual and family life in a diverse global society. Areas of focus include human development and family science; nutrition and exercise physiology; sustainable architecture and interior design; personal financial planning; textile and apparel management; and social work.

SCHOOL OF JOURNALISM

The world's first journalism school is also one of the most internationally renowned. It combines a broad liberal arts curriculum with hands-on, real-media opportunities. Students staff seven professional multimedia and multiplatform newsrooms as well as two strategic communication agencies that serve multinational clients.

GRADUATE PROGRAMS

- College of Veterinary Medicine
- School of Information Science & Learning Technologies
- School of Law
- School of Medicine
- Harry S Truman School of Public Affairs

HONORS COLLEGE

If you really stand out, the Honors College is for you. We look for diverse, talented and highly motivated students to provide them with the intimacy of a small college and the breadth of a large and distinguished research institution. Qualifying students earn Honors Certificates at graduation.

GET STARTED. APPLY OR SCHEDULE A TOUR TODAY.

MAJOR CHOICES.

YOU'RE BOUND TO FIND A DEGREE PROGRAM THAT SUITS YOU, OR YOU CAN GET CREATIVE AND MAKE YOUR OWN COMBO.

We're talking opportunities — lots of them. Love one. Love two. That's why they made double majors and minors.

Accountancy
Agribusiness Management
Agricultural Economics
 Public Policy
Agricultural Education
 Leadership
 Teacher Certification
Agricultural Systems Management
Agriculture
 Sustainable Agriculture
Animal Sciences
Anthropology
Architectural Studies
 Architectural Studies
 Interior Design
Art*
Art History and Archaeology
Athletic Training
Biochemistry
Biological Sciences
Business Administration
 Economics
 Finance and Banking
 International Business — Economics
 International Business — Finance
 International Business — Management
 International Business — Marketing
 Management
 Marketing
 Real Estate
Chemistry
Classics
 Classical Humanities
 Classical Languages
 Greek
 Latin
Clinical and Diagnostic Sciences
 Clinical Laboratory Science
 Diagnostic Medical Ultrasound

Nuclear Medicine
 Radiography
 Respiratory Therapy
Communication
Communication Science and Disorders
Computer Science
Digital Storytelling
Economics
Education — Early Childhood
Education — Elementary
 Elementary Education
Education — Middle School
 Language Arts
 Mathematics
 Science
 Social Studies
Education — Secondary
 Art Education
 Biology
 Chemistry
 Earth Science
 General Science
 Language Arts
 Mathematics Education
 Physics
 Social Studies
Education — Special Education
 Cross-Categorical Special Education
Educational Studies
 Interdepartmental
Engineering — Biological
Engineering — Chemical
 Biochemical
 Environmental
 Materials
Engineering — Civil
Engineering — Computer
Engineering — Electrical
Engineering — Industrial

Engineering — Mechanical
 Aerospace Engineering
English
Film Studies
Fisheries and Wildlife
Food Science and Nutrition
Forestry
 Forest Entrepreneurship and Business
 Forest Resource Management
 Individualized Studies
 Urban Forestry
General Studies
Geography
 General Geography
 Geographic Information Sciences
 Physical/Environmental
 Regional/Cultural
Geological Sciences
German
Health Science
 Health and Wellness Services
 Leadership and Policy
 Pre-Professional
 Rehabilitation Sciences
History
 Public History
Hospitality Management
 Conference and Event Planning
 Management
 Food and Beverage Management
 Lodging Management
 Sport Venue Management
Human Development and Family Studies
 Child Development and Education
 Child Life Specialist
 Early Childhood Education in a
 Mobile Society
 Family and Consumer Sciences Education
 Family and Lifespan Development

Information Technology
Interdisciplinary
 Black Studies
 Environmental Studies
 Peace Studies
 Women's and Gender Studies
International Studies
 East Asian Studies
 Environmental Studies
 European Studies
 International Business
 Latin American Studies
 Peace Studies
 South Asian Studies
Journalism**
Linguistics
Mathematics
 Actuarial Science and
 Mathematical Finance
Music
 Composition
 Music Education
 Music History
 Music Theory
 Performance
Nursing
Nutritional Sciences
 Nutrition and Fitness
 Nutrition and Foods
 Nutritional Sciences
Parks, Recreation and Tourism
 Leisure Service Management
 Natural Resource Recreation
 Management
 Sport Management
 Tourism Development
Personal Financial Planning
 Financial Counseling
 Personal Financial Management Services
 Personal Financial Planning

Philosophy
Pre-Occupational Therapy
Pre-Professional Physical Therapy
Physics
 Astronomy
 Materials Science
Plant Sciences
 Breeding, Biology and
 Biotechnology
 Crop Management
 Horticultural Science and Design
 Turfgrass Science
Political Science
Psychology
Religious Studies
Romance Languages
 French
 Spanish
Russian
Science and Agricultural Journalism
Social Work
Sociology
Soil, Environmental and Atmospheric Sciences
 Atmospheric Science
 Environmental Science
 Environmental Soil Science
 Soil Resource Management
Statistics
Textile and Apparel Management
Theatre
 Design/Technical
 Performance
 Writing for Performance
Professional Tracks
 Pre-law
 Pre-medicine
 Pre-veterinary medicine

Admission to MU does not guarantee you admission to the separate schools, colleges or programs within the university.

Degree listed might not be the official degree name. For complete and official listing of degrees, please consult the university catalog: catalog.missouri.edu

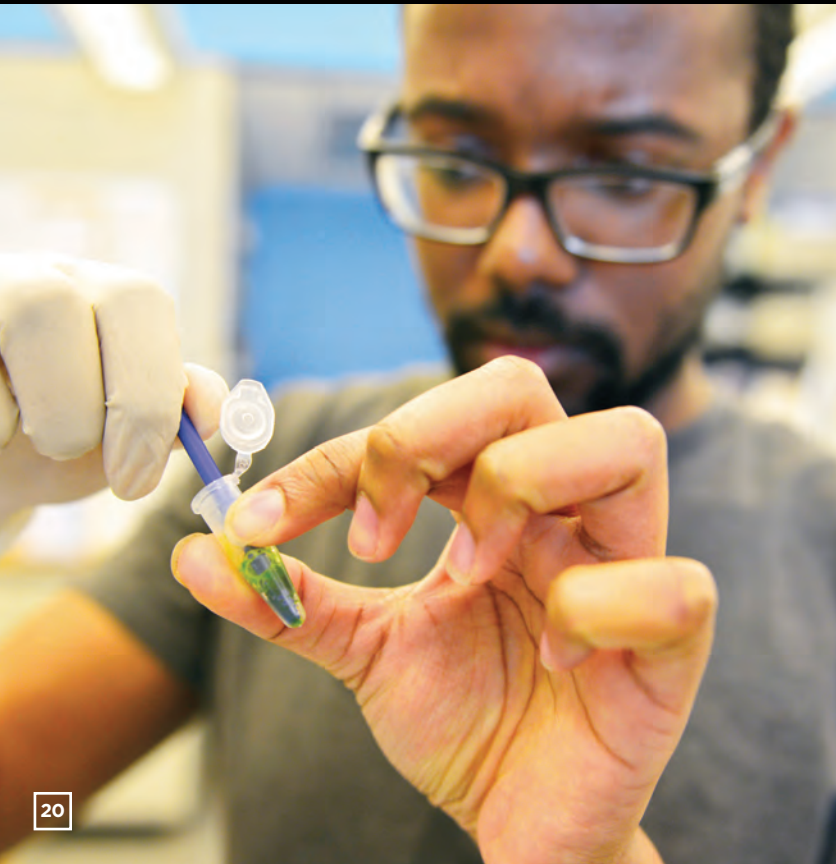
Many majors have concentrations or tracks, which are collections of courses leading to a more focused program of study. Here are some examples:

***ART MEDIA:** *Graphic Design, Ceramics, Drawing, Painting, Printmaking, Photography, Fibers, Sculpture*

****JOURNALISM:** *Arts and Culture Journalism, Business and Economics Journalism, Convergence Photojournalism, Convergence Radio Reporting and Producing, Convergence Television Reporting, Emerging Media, Entrepreneurial Journalism, Individually Designed Interest Area, International Journalism, International Strategic Communication, Magazine Design, Magazine Editing, Magazine Publishing and Management, Magazine Writing, Multimedia Producing, Multiplatform Design, News Design, News Editing, News Reporting, Photojournalism, Radio-Television Producing, Radio-Television Reporting and Anchoring, Radio-Television Sports Journalism, Radio-Television Watchdog Journalism, Science and Health Journalism, Sports Journalism, Strategic Communication Account Management, Strategic Communication Art Direction, Strategic Communication Copywriting, Strategic Communication Interactive, Strategic Communication Media Planning, Strategic Communication Public Relations, Strategic Communication Research, Visual Editing and Management, Watchdog Journalism*



MILKY



WALK AROUND IN THE SHOES OF YOUR FUTURE SELF.

Teach 4-year-olds how to read. Report a newsworthy story. Make guests feel at home in a bed and breakfast. One of the many wonderful things about attending Mizzou is that your education doesn't end

in the classroom. Through hands-on learning, we provide opportunities for you to apply your college knowledge to real life. That way you'll get a true feel for what you want (or think you want) to be.

GET STARTED. APPLY OR SCHEDULE A TOUR TODAY.

MĀMĀ, BÀBA, WŌ ZHÈNGZÀI ZHŌNGGUÓ XUÉXÍ YI NIÁN

(妈妈爸爸，我正在中国学习一年)

**TRANSLATION FROM MANDARIN: “MOM,
DAD, I’M STUDYING IN CHINA FOR A YEAR”**



Through our study abroad program, you’ll have more than 50 countries to choose from, including South Africa, Italy, Peru and China. You could go for an intersession, a semester or a full academic year. In one year more than 1,400 students studied abroad. It’s a life-changing experience you won’t want to miss. As a new student you can even get a passport right here on campus. Plane tickets? Check. Bags packed? Check. *Bon Voyage!*



- ARGENTINA
- AUSTRALIA
- AUSTRIA
- BELGIUM
- BOLIVIA
- BRAZIL
- BULGARIA
- CANADA
- CHILE
- CHINA
- COSTA RICA
- CUBA
- CZECH REPUBLIC
- DENMARK
- DOMINICAN REPUBLIC
- ECUADOR
- FRANCE
- GEORGIA
- GERMANY
- GHANA
- GREECE
- HUNGARY
- INDIA
- INDONESIA
- IRELAND
- ISRAEL
- ITALY
- JAMAICA
- JAPAN
- JORDAN
- KAZAKHSTAN
- MOROCCO
- NETHERLANDS
- NEW ZEALAND
- NORWAY
- PERU
- RUSSIA
- SAINT LUCIA
- SENEGAL
- SINGAPORE
- SOUTH AFRICA
- SOUTH KOREA
- SPAIN
- SWEDEN
- SWITZERLAND
- THAILAND
- TURKEY
- UNITED ARAB EMIRATES
- UNITED KINGDOM



YOU'VE EARNED A BREAK.

WHY NOT MAKE IT A LIFE-CHANGING ROAD TRIP?

Join in on Alternative Breaks, a student-led program where you'll travel during spring, winter or weekend school breaks to work for the good of others.

You might build houses with Habitat for Humanity, work with kids in community centers, help with disaster relief, serve at food banks or care for people in free clinics.

It might be in your own backyard or across the globe. Mizzou Alternative Breaks is the largest program of its kind in the U.S.

Sure, you could take a typical college spring break, but you're not typical. You might not come back from these breaks with a tan, but you will probably have so many stories to share you'll glow.

GET STARTED. APPLY OR SCHEDULE A TOUR TODAY.



PREPARE FOR TAKEOFF

So what happens after you arrive at Mizzou? Amazing internship opportunities. Calls and visits from recruiters. Career fairs featuring top companies from across the country.

All of that.

Then, you could join our notable alumni list.

Even if you don't show up in a Google search, you will still be notable to us and to those who know you best. Because **YOU ARE YOU.**

“SO, WHAT ARE YOU GOING TO DO AFTER YOU GRADUATE?”

HERE IS A LIST OF SOME OF THE COMPANIES AND GOVERNMENT OFFICES OUR FORMER STUDENTS HAVE JOINED:

- | | | | |
|--------------------------------------|-------------------|---|--|
| Accenture | Disney | Monsanto | Thumper Entertainment |
| AdKarma | E & J Gallo | NASA Jet Propulsion Lab | Toyota |
| Aflac | Edward Jones | National Network to End Domestic Violence | United Nations Development Programme |
| Apple | Emerson Electric | NBC | United Nations Population Fund |
| Association of American Universities | Enterprise | Northwestern Mutual | U.S. Department of Agriculture |
| AT&T | Ernst & Young | The New York Times | U.S. Department of Housing and Urban Development |
| Best Buy | ESPN | PepsiCo | U.S. Environmental Protection Agency |
| Boeing | General Mills | Pipeline | Vanity Fair |
| Caterpillar | Google | PricewaterhouseCoopers | Victoria's Secret |
| CBS | Huffington Post | Procter & Gamble | Wells Fargo |
| Cerner | KPMG | Snapchat | |
| CNN | Lockton Companies | Target | |
| Deloitte | Mass Mutual | TEKsystems | |
| | Microsoft | | |

Mizzou has more than 300,000 alumni living all over the world. Emmy Award-winning actor Jon Hamm and Grammy Award-winning singer Sheryl Crow attended MU.



FIND MIZZOU ALUMNI AROUND THE WORLD.



1968
WINNIE FRITZ

U.S. Army Vietnam War veteran and revolutionary health care leader



2013
KATE NOLAN
Boeing engineer



1976, 1980
LINDA GODWIN

Physics professor and former NASA astronaut



1990
MARK WILKINS

Wealth adviser for Merrill Lynch



2016
KYLE HOLTZMAN

Account strategist at Google



2002, 2007
ANDREA WOOLVERTON

Owner of Twin Engine Coffee in Nicaragua



2006
MAX SCHERZER

Cy Young Award-winning pitcher



1976, 1980, 1988
OKELEKE NZEOGWU

Director of the MBA program at Roseman University of Health Sciences in Nevada



1987
GLEN VANHERCK

U.S. Air Force brigadier general



1981
GEORGE HODGMAN

Bestselling author of the memoir *Bettyville*



1983
JAMES WHITE

CEO of Jamba Juice



2012
KAM PHILLIPS

Founder of Dream Outside The Box, a nonprofit organization for youth



1993
JON HAMM

Emmy Award-winning actor



2014
AARON MACK

VP of public relations for AIESEC United States, a nonprofit that sends young people across the globe



1984, 1985
JOSÉ GUTIÉRREZ

President of AT&T's Wholesale Solutions

LITERALLY AND FIGURATIVELY.



WHY IT'S GOOD TO BE SOCIAL

*WE'RE TALKING FACE-TO-FACE,
THE OLD-FASHIONED WAY.*

Social development is a big part of college. Mizzou provides you with extraordinary opportunities to grow and to find some of your closest friends. This is a defining time in your life. Here, you will turn into your true self. You will become the best version of **YOU**.





GOT A HOBBY? JOIN THE CLUB.



Choose from more than 600 student-run organizations and 1,600 educational and cultural programs covering every interest under the sun, including Greek Life, swing dance, kayaking, campus ministry, social justice, roller hockey and robotics. You can even start your own club. There's something for everyone, even — **YOU**.

Browse the full list of student organizations at getinvolved.missouri.edu.

Learn more about Mizzou's Greek community at greeklife.missouri.edu.

GET STARTED. APPLY OR SCHEDULE A TOUR TODAY.

UNLIMITED CUISINE UNLIMITED FRIENDS UNLIMITED HAPPY

Mizzou has more than 20 housing options. Each one is a supportive community for living and learning. Every residence hall offers similar basic amenities, so you can focus on choosing which Learning Community (LC) and/or Freshman Interest Group (FIG) fits you. All students live together in LCs and FIGs that encompass similar interests or academic paths so everyone gets the most out of their living and learning experience.

Same goes for roommates — once you've selected your community, chances are good you will have a roommate with similar interests.

We offer four residential dining facilities, six à la carte kitchens and several restaurants, coffee shops and convenience stores.

ALL OF OUR RESIDENCE HALLS OFFER:

- Wi-Fi throughout each hall and room in addition to high-speed Ethernet in each student room
- PC and Mac computer labs nearby with internet access, specialized software and laser printers
- Professional residence hall coordinators and student staff members who live in the halls
- All the stuff you need to make Mizzou home: kitchens, laundry, lounges, study rooms and social spaces.

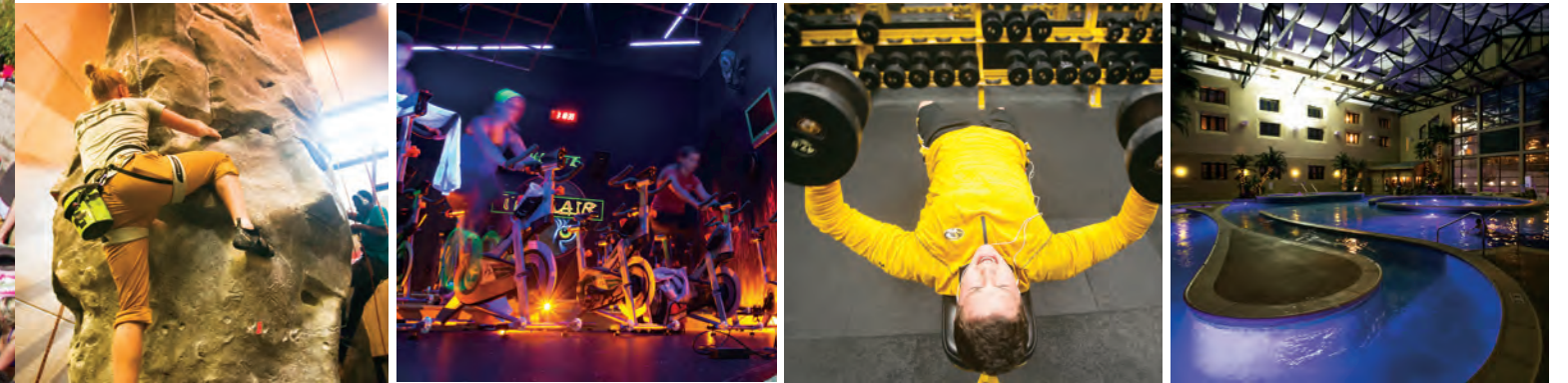
WE REALLY DO WANT YOU TO BE YOURSELF.

Mizzou has a space open to students of any gender, with the goal of creating a safe, secure housing option for those students who are transgender or gender nonconforming.



MizzouRec contains four pools — including a lazy river — a spa, a dance studio, 100-plus cardio machines and more than 14,000 pounds of free weights.

ONE OF THE BEST COLLEGE REC CENTERS IN THE COUNTRY



Prepare to be blown away by Mizzou's Student Recreation Complex, a monument to sweat, swimming and swagger. Consistently named to national top 10 lists, MizzouRec's historic building houses a full-service spa, a climbing wall, boxing

and cycling classes, tons of basketball and racquetball courts, and of course, four spectacular pools. You can even work at MizzouRec, which employs more than 400 students. Feel the burn.

GET STARTED. APPLY OR SCHEDULE A TOUR TODAY.

COLLEGE-TOWN LATITUDE METROPOLITAN ATTITUDE



If you look on a map, you'll see the city of Columbia is located right in the middle of the U.S. and in between two big cities — Kansas City and St. Louis.

Our quintessential college town is a breath of fresh Mid-Missouri air. The locals embrace all things Mizzou. Entrepreneurs run student-friendly shops, restaurants, galleries and music venues. Many of them fly black and gold flags and offer special deals for students.

In addition to being devoted to university life, Columbia offers so much more including festivals, nature parks and trails, gardens, art galleries and farmers markets.

And if you find yourself craving the city life, know that you're only about two hours away from the hustle and bustle of K.C. or the Lou. Just hop on I-70 and head east or west.





M

M

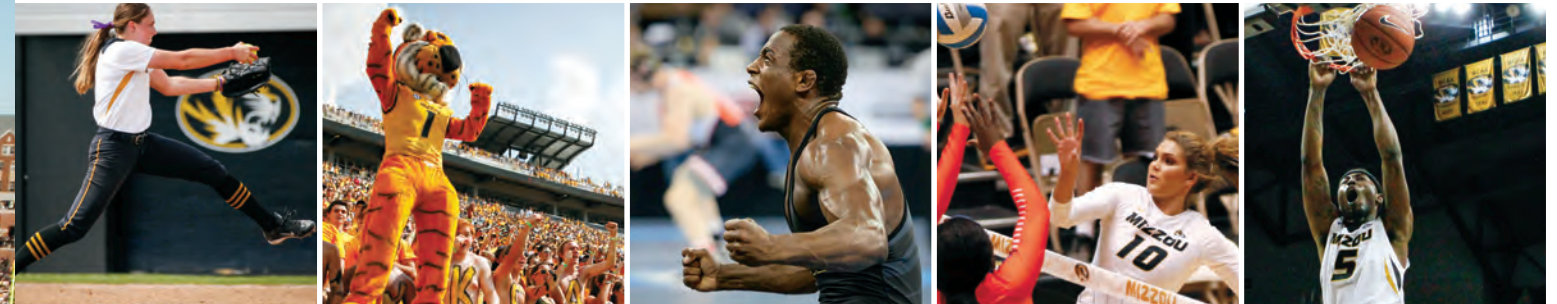
M

U

U



M-I-Z, Z-O-U!



There you are, shoulder to shoulder with classmates, decked in gold and screaming your face off among nearly 70,000 Mizzou football fans as the Tigers do battle in the mighty Southeastern Conference. It's enough to give you goose bumps, isn't it? The athletics action goes beyond Faurot Field. The softball program is one of the

best in the nation. The volleyball team spiked its way to the NCAA tournament in 2015. Baseball regularly turns out major league players. Men's and women's basketball rev up Mizzou Arena, and two-time NCAA champion wrestler J'den Cox competed on the 2016 U.S. Olympic team. How's that for some Tiger Pride?

GET STARTED. APPLY OR SCHEDULE A TOUR TODAY.

HOME SWEET HOMECOMING

#BESTHOMECOMINGEVER



So many students and alumni call Mizzou home, it's no wonder our Homecoming tradition is one of the most popular in the U.S. It's also one of the first, beginning in 1911 as a way to hype a football rivalry with pep rallies, a parade and a bonfire.

Now it's a city-wide festival, run by students, that features talent competitions, tailgating, elaborate decorations and community service efforts — including one of the nation's largest university blood drives.



It's a tradition for incoming freshmen to whitewash the stones that form the Rock "M" in Memorial Stadium's north end zone. After the final home game, it's also a tradition for each of the senior players to take one of those stones.



STRIPES BECOME YOU.

You strive to be the best version of you. You are ready to create your own adventure. You are hungry to learn and grow. You celebrate individuality, and above all you are ferocious, faithful and kind.

If this sounds like you — you've got Tiger Pride already. We invite you to take the next step.



In recent years, Mizzou has awarded nearly \$130 million in undergraduate grants and scholarships.

AT MIZZOU, YOUR DOLLARS MAKE SENSE

Now is the time to start thinking about how you are going to pay for college. The research you do today can really pay off come tuition time. And here's one really important thing you need to know about money and Mizzou: Four out of five Mizzou students receive some form of assistance through grants, scholarships, loans or other financial aid. Some scholarships are based on financial need; others are awarded for academic achievement or talent. For maximum financial aid consideration, follow these steps:

1

Simply apply for admission to qualify for the automatic scholarships listed on the next page. You'll receive myZou login information by email within a few days of submitting your application. Applying for admission by Dec. 1 ensures you can complete step two.

2

To be considered for general and departmental scholarships, fill out the MU Annual Scholarship Application in myZou by Dec. 15. Go to scholarships.missouri.edu for instructions and additional information about the scholarships available.

3

For loans and grants, submit your Free Application for Federal Student Aid (FAFSA) by March 1 for priority consideration. Note that some scholarships require submission of the FAFSA earlier than the priority date.

AUTOMATIC SCHOLARSHIPS AWARDED UPON ADMISSION

CHANCELLOR'S AWARD — \$6,500/YEAR

- Top 10 percent of high school graduating class**
- ACT score of 31 or higher, or a 1420 SAT or higher (redesigned exam) or a 1360 SAT or higher (math and critical reading scores, pre-March 2016 exam).*
- Missouri resident graduating from an accredited high school

CURATORS SCHOLAR AWARD — \$4,500/YEAR

- Top 5 percent of high school graduating class**
- ACT score of 28 or higher, or a 1310 SAT or higher (redesigned exam) or a 1250 SAT or higher (math and critical reading scores, pre-March 2016 exam).*
- Missouri resident graduating from an accredited high school

EXCELLENCE AWARD

Award amount varies:

- Top 25 percent of high school graduating class** and ACT score of 27 or higher, or a 1280 SAT or higher (redesigned exam) or a 1210 SAT or higher (math and critical reading scores, pre-March 2016 exam).* = \$2,000/year
- Top 50 percent of high school graduating class** and ACT score of 27 or higher, or a 1280 SAT or higher (redesigned exam) or a 1210 SAT or higher (math and critical reading scores, pre-March 2016 exam).* = \$1,000/year
- Missouri resident graduating from an accredited high school

DIVERSITY AWARD

Membership in a racial or ethnic minority group that is underrepresented in relation to the university's goal to achieve educational benefits of a diverse student body. Missouri resident: \$2,500/year. Nonresident: waiver of nonresident portion of tuition.

- Recipients are automatically pre-screened and selected based on high school class rank**, ACT or SAT scores and grades in college prep courses.

MARK TWAIN NONRESIDENT SCHOLARSHIP

Award amount varies:

- Top 25 percent of high school graduating class** and ACT score of 30–36, or a 1390–1600 SAT (redesigned exam) or a 1330–1600 SAT (math and critical reading scores, pre-March 2016 exam).* = \$10,000/year
- Top 50 percent of high school graduating class** and ACT score of 30–36, or a 1390–1600 SAT (redesigned exam) or a 1330–1600 SAT (math and critical reading scores, pre-March 2016 exam).* = \$8,500/year
- Top 25 percent of high school graduating class** and ACT score of 27–29, or a 1280–13800 SAT (redesigned exam) or a 1210–1320 SAT (math and critical reading scores, pre-March 2016 exam).* = \$7,000/year
- Top 50 percent of high school graduating class** and ACT score of 27–29, or a 1280–13800 SAT (redesigned exam) or a 1210–1320 SAT (math and critical reading scores, pre-March 2016 exam).* = \$5,000/year

May be canceled or reduced if nonresident tuition is waived or paid by another source.

MIZZOU HERITAGE SCHOLARSHIP

100 percent nonresident tuition waiver. May be canceled or reduced if nonresident tuition is waived or paid by another source.

- Student whose biological, adoptive or stepparent graduated from the University of Missouri
- Top 25 percent of high school graduating class**
- ACT score of 27 or higher, or a 1280 SAT or higher (redesigned exam) or a 1210 SAT or higher (math and critical reading scores, pre-March 2016 exam).*
- Non-Missouri resident

NATIONAL MERIT/ACHIEVEMENT SCHOLARSHIP

\$1,000 minimum; up to \$2,000 if you demonstrate financial need.

Nonresident students receive a full out-of-state tuition waiver.

- Be a National Merit/Achievement finalist, taking the PSAT in the fall of your junior year in high school and the SAT subsequently
- Declare Mizzou as your first choice with the National Merit Scholarship Corporation

COMPETITIVE SCHOLARSHIPS

GEORGE C. BROOKS SCHOLAR AWARD

Membership in a racial or ethnic minority group that is underrepresented in relation to the university's goal to achieve educational benefits of a diverse student body. Missouri resident: \$7,500/year. Nonresident: \$7,500 plus nonresident tuition waiver. A maximum of 35 recipients will be chosen. Interested applicants should apply for admission and ensure receipt of official transcripts, test scores and other information by Dec. 15.

- Excellent academic record
- High ACT or SAT scores

For details, please visit scholarships.missouri.edu.

MIZZOU SCHOLARS AWARD — \$10,000/YEAR

Approximately 30 students will receive the award. Must be a Missouri resident. Interested applicants should apply for admission and ensure receipt of official transcripts and test scores by Dec. 1 of their senior year. Mizzou Admissions will contact qualified candidates in late December. Candidates will be asked to submit a résumé and essay for consideration. A committee will review candidates and make final selections based upon credentials and supplemental material, with the strongest consideration given to the strength of the academic record.

- Minimum ACT score of 33 or higher, or a 1490 SAT or higher (redesigned exam) or a 1440 SAT or higher (math and critical reading scores, pre-March 2016 exam).* by Dec. 1
- Excellent academic record

*Scores listed for the redesigned SAT (offered after March 2016) are based on the College Board's new concordance table. Scores are subject to change. Please see scholarships.missouri.edu for the most up-to-date information.

**Class rank for students who attend non-ranking high schools will be represented by a core grade point average (GPA). This GPA is calculated by Mizzou based on grades in required core college-prep courses and is different and typically lower than the transcript GPA.

All of these scholarships require recipients to have lawful status as a U.S. Citizen or Permanent Resident and to enroll at Mizzou the first semester after high school graduation. Some are mutually exclusive.

2016–17 ESTIMATED UNDERGRADUATE COST OF ATTENDANCE

(Assumes 14 credit hours of enrollment each semester.)

	MISSOURI RESIDENT	NONRESIDENT
TUITION*	\$10,716	\$25,998
ROOM AND BOARD	\$10,558	\$10,558
TOTAL	\$21,274	\$36,556

NOTE: These costs do not include estimates for books, supplies and any personal expenses.

* The cost of attendance presented is a standardized estimate of various university charges and other educational expenses. Amounts are subject to change at any time; however, any tuition or fee increases must be approved by the University of Missouri Board of Curators 30 days prior to the beginning of the academic term. Any approved revision of tuition/fees are effective regardless of whether they have been paid prior to the revision.

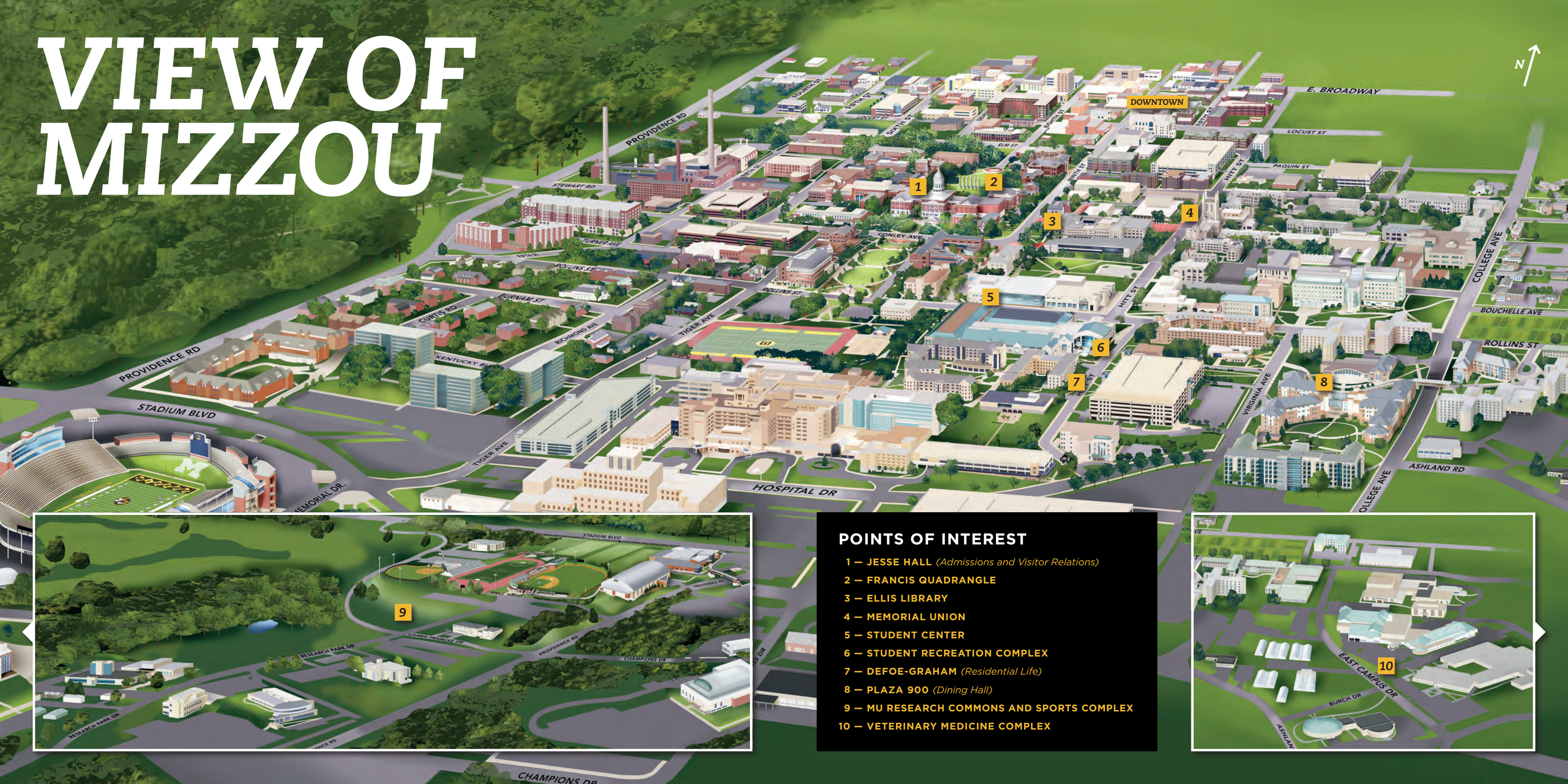
You must file the FAFSA by March 1 for priority consideration. Mizzou's FAFSA code is 002516.

Dec. 15 is the scholarship application deadline for incoming freshmen.

To find complete information and details on scholarships, grants, student employment, loans and more, visit financialaid.missouri.edu.

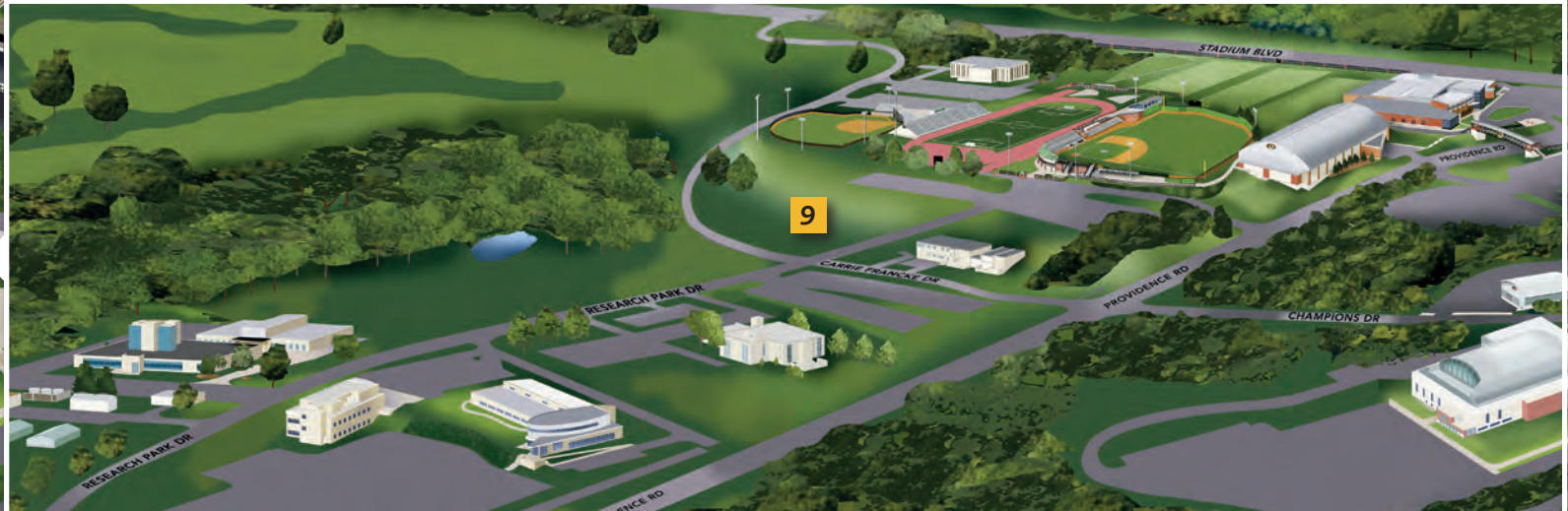


VIEW OF MIZZOU



POINTS OF INTEREST

- 1 — JESSE HALL (*Admissions and Visitor Relations*)
- 2 — FRANCIS QUADRANGLE
- 3 — ELLIS LIBRARY
- 4 — MEMORIAL UNION
- 5 — STUDENT CENTER
- 6 — STUDENT RECREATION COMPLEX
- 7 — DEFOE-GRAHAM (*Residential Life*)
- 8 — PLAZA 900 (*Dining Hall*)
- 9 — MU RESEARCH COMMONS AND SPORTS COMPLEX
- 10 — VETERINARY MEDICINE COMPLEX



DEAR MOMS AND DADS,

**WE KNOW THEY'RE NOT BABIES ANYMORE,
BUT THEY WILL ALWAYS BE YOUR BABIES.**

We get it. You want to make sure your kids can make it on their own. But you also want to feel good about where they are. Well, for now they're our family, too. We're looking out for them.

The Office of Parent Relations is the place to get your questions answered and your concerns addressed. It's also a place where you can meet and become friends with other Mizzou parents.

Mizzou hosts events specifically for families, and be sure to come for the Summer Welcome, student send-offs, Family Weekend, Homecoming and, of course, commencement. These are all great opportunities to be a part of the Tiger family and spend time with your pride and joy.





VISIT.

Is Mizzou the right place for you? Firsthand experience is the best way to find out. We hold formal visit days all year, and we're always happy to show you around any weekday. You can tour campus, meet Mizzou students and professors, visit our residence halls and learn all about financial aid and the application process. We'll even treat you to lunch.

SCHEDULE YOUR VISIT ONLINE AT
[ADMISSIONS.MISSOURI.EDU/VISIT](https://admissions.missouri.edu/visit)

APPLY.

You can apply online. Be sure to include the \$55 application fee, request that your high school send official transcripts, and have an official report of your ACT or SAT scores sent directly from ACT or the College Board.

MIZZOU ACT CODE: 2382 / MIZZOU SAT CODE: 6875

**FIND EVERYTHING YOU NEED TO KNOW ABOUT APPLYING,
INCLUDING ADMISSION REQUIREMENTS, AT [ADMISSIONS.MISSOURI.EDU](https://admissions.missouri.edu).**

Don't forget to apply for scholarships by Dec. 15.

SEE YOU AT MIZZOU.



DISCLAIMER

All the statements in this publication concerning requirements, prerequisites, conditions or other matters are for informational purposes only and are subject to change without notice. They are not to be regarded as offers to contract.

NOTICE OF NONDISCRIMINATION

The University of Missouri does not discriminate on the basis of race, color, national origin, ancestry, religion, sex, sexual orientation, gender identity, gender expression, age, genetic information, disability or protected veteran status. For more information, call Human Resource Services at 573-882-4256, the Director of MU Equity/Title IX Coordinator at 573-882-9069 or the U.S. Department of Education, Office of Civil Rights.

**EQUITY IN ATHLETICS
DISCLOSURE ACT**

The University of Missouri-Columbia is in compliance with the Equity in Athletics Disclosure Act of 1994, Section 360b of Pub. L. 103-382. This Act and accompanying federal regulations require that certain information with regard to intercollegiate athletics, including operating expenses, revenue, salaries and participation rates, be made available to current and prospective students and the public. This report is available from the Department of Intercollegiate Athletics, 573-882-6501.

MIZZOU (USPS 651-820)

Volume 117, Number 3
August 2016
General 2016 Series, Number 3

Published by the University of Missouri-Columbia, Campus Mail Service Facility, Columbia, MO 65211. Issued six times a year as follows: one in February, one in May, two in August, and two in October. Periodicals postage paid at Columbia, MO. POSTMASTER: Send address changes to Mizzou, Office of Admissions, 230 Jesse Hall, Columbia, MO 65211-1300.

163373, Printed 2016



University of Missouri